

# TOOGOOD GOLD

A stylized logo consisting of three overlapping, wavy shapes in shades of green and blue, positioned below the main title.

District-Scale Undrilled Gold System in Nevada  
High-Grade Gold Discovery with District-Scale Upside in Newfoundland

- Table Mountain Project (Nevada)
  - District-scale, undrilled low-sulphidation epithermal system
  - Aggressive exploration commencing in May
  - Targeting maiden Q3 drill program
  
- Toogood Gold Project (Newfoundland)
  - Growing high-grade, at-surface drilling discovery "Quinlan Zone"
  - District-scale upside (>164 km<sup>2</sup>)
  
- Proven team with >C\$4.1B in value creation for shareholders, past and present experiences include:
  - Snowline Gold
  - Dolly Varden Silver
  - Discovery Group
  - SSR Mining
  - Gladiator Metals
  - Northern Empire
  
- Dynamic growth strategy
  - M&A review, generative exploration



Visible gold in outcrop, Toogood Gold Project, Newfoundland

## Colin Smith

### DIRECTOR & CEO

Geologist (M.Sc., P.Geo.) and mining executive with 20+ years' experience; formerly with **Discovery Group** (VP Exploration and CEO, **SSR Mining** (Sr. Geologist), now CEO & Director, First Andes Silver.

## Lee Hess

### VP EXPLORATION

Structural geologist specializing in Great Basin epithermal systems with >15 years of experience focused on structurally controlled gold systems across North and South America. Formerly Senior Geologist, Global Project Generation with **SSR Mining**.

## Cheryll Lingal

### CFO

Senior Director at RW Global, providing financial and accounting support to venture public companies, and CFO of Golden Cross Resources. Former Manager at Grant Thornton LLP, overseeing assurance for private and public mining companies.

## Matthew Roma

### DIRECTOR

Resource finance executive with 13+ years' experience; CEO & Director of Golden Cross Resources, Co-Founder of Gladiator Metals, founding CFO of **Snowline Gold**. Key role in raising \$150M+ in equity capital.

## Darren Devine

### DIRECTOR

Principal of CDM Capital Partners, advising on corporate finance and M&A. Chairman of **Dolly Varden Silver** and Gladiator Metals; former securities lawyer and member of TSX Venture Exchange Advisory Committee.

## Shawn Khunkhun

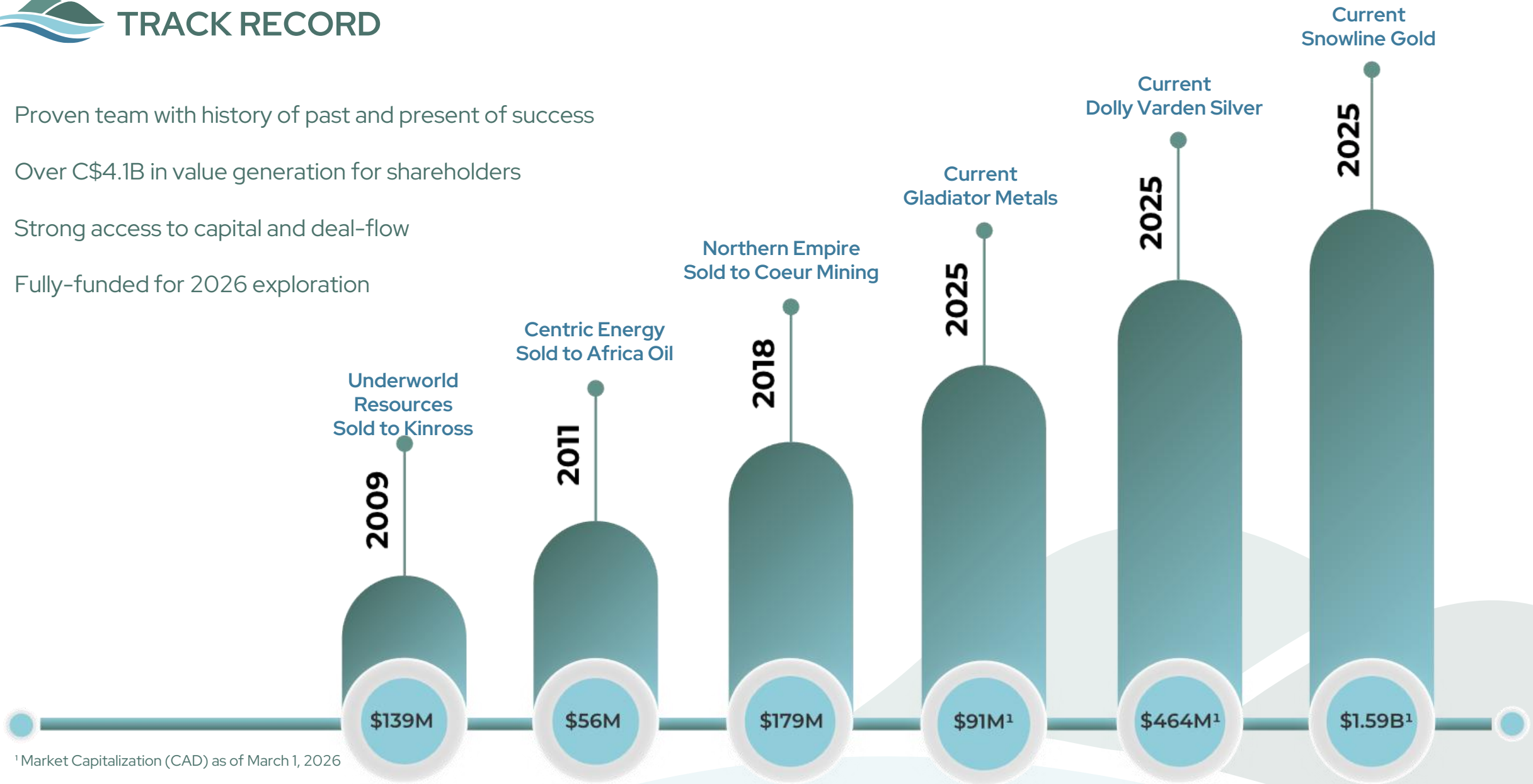
### STRATEGIC ADVISOR

20 years in capital markets and mineral exploration, focused on shareholder value. CEO & Director of **Dolly Varden Silver**; Director of Goldshore Resources and Strikepoint Gold. Instrumental in \$1B+ in capital raises.



# TRACK RECORD

- Proven team with history of past and present of success
- Over C\$4.1B in value generation for shareholders
- Strong access to capital and deal-flow
- Fully-funded for 2026 exploration



<sup>1</sup> Market Capitalization (CAD) as of March 1, 2026



- Tightly structured gold explorer with significant discovery leverage
- >\$3.2M CAD in treasury

TSXV: TGC; OTCQB: TGGCF

**84M**

Shares

**\$0.15**

Share Price

**\$14.4M**

Market Cap

**93.3M**

Fully Diluted

**\$3.2M**

Cash

**1.8M**

Options

\$0.10; \$0.235; \$0.25; \$0.41

**5.3M**

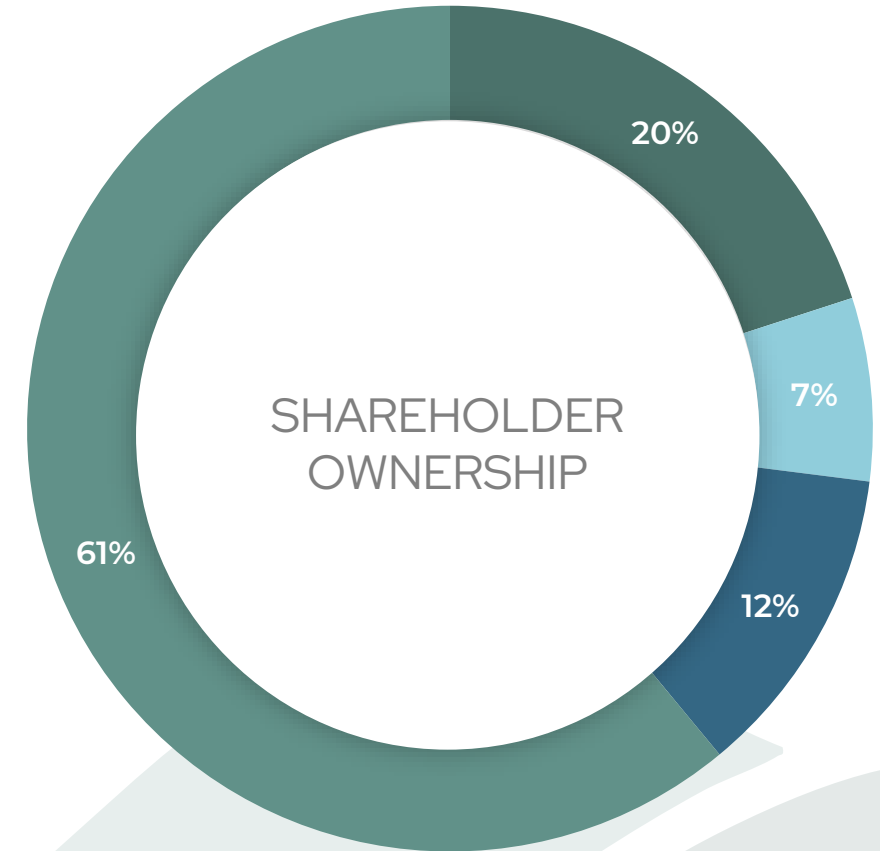
Warrants

\$0.10; \$0.30; \$0.45

**2.5M**

RSUs

As of March 1, 2025

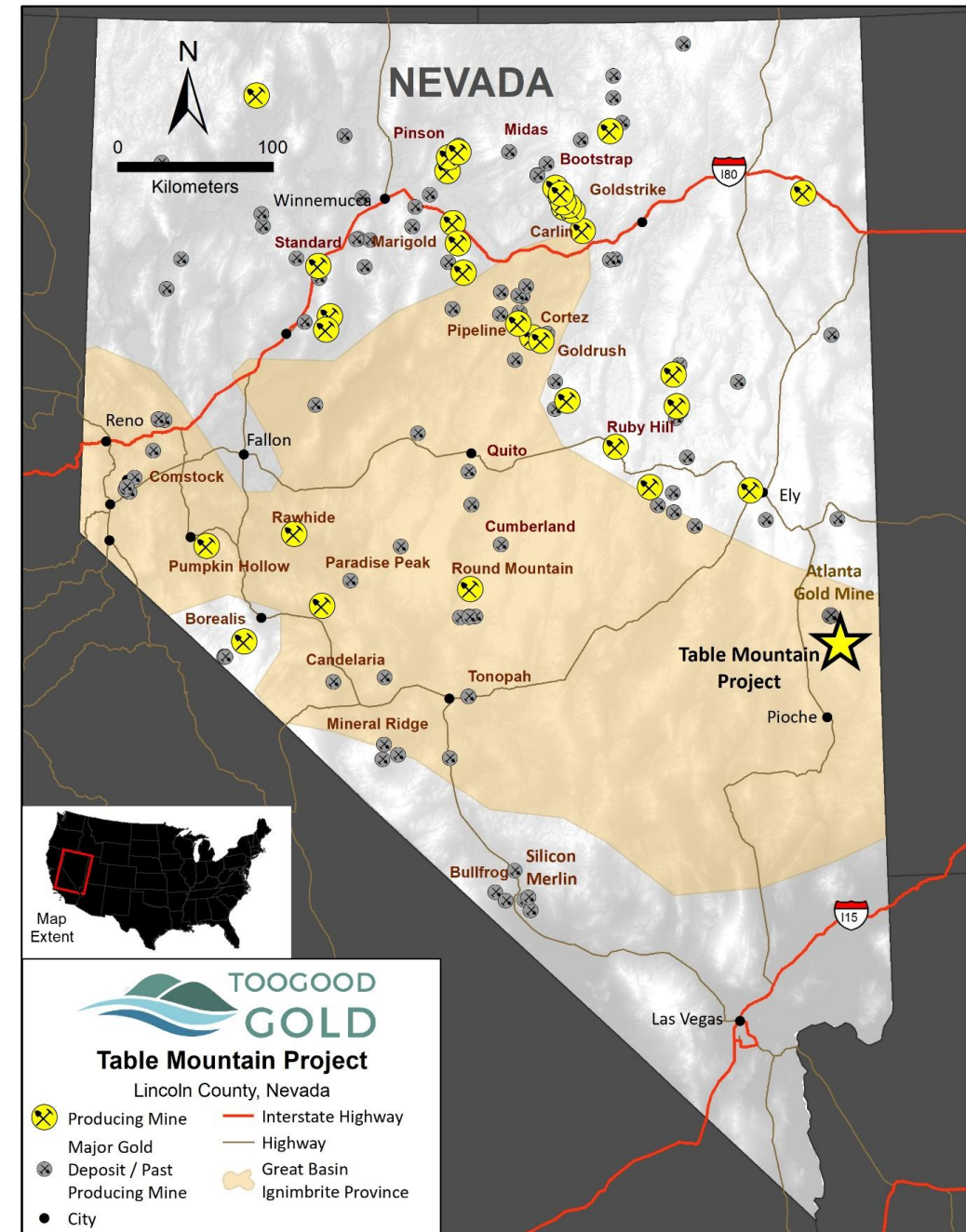


■ Insiders & close associates   ■ Discovery Group   ■ Institutional   ■ Retail



# TABLE MOUNTAIN PROJECT

- District-scale, undrilled low-sulphidation epithermal (“LSE”) gold system in Nevada
- Tier-1 address, 10 km south of past-producing Atlanta Mine (2024 NI 43-101 resource of >1 Moz Au); Nevada King Gold drilling >30km this year, supported by recent \$10M strategic investment by Centerra Gold
- Table Mountain generated by Orogen Royalties and Altius Minerals; Orogen was responsible for generating the Silicon Project (led to >4Moz oxide Au discovery by AngloGold Ashanti)
- “Best greenfields opportunity we have generated to date,” senior management, Orogen
- Clear path to high-impact maiden Q3 drill campaign
- Strong interest from majors on Table Mountain (Barrick, Newmont, AngloGold, SSR, Kinross)

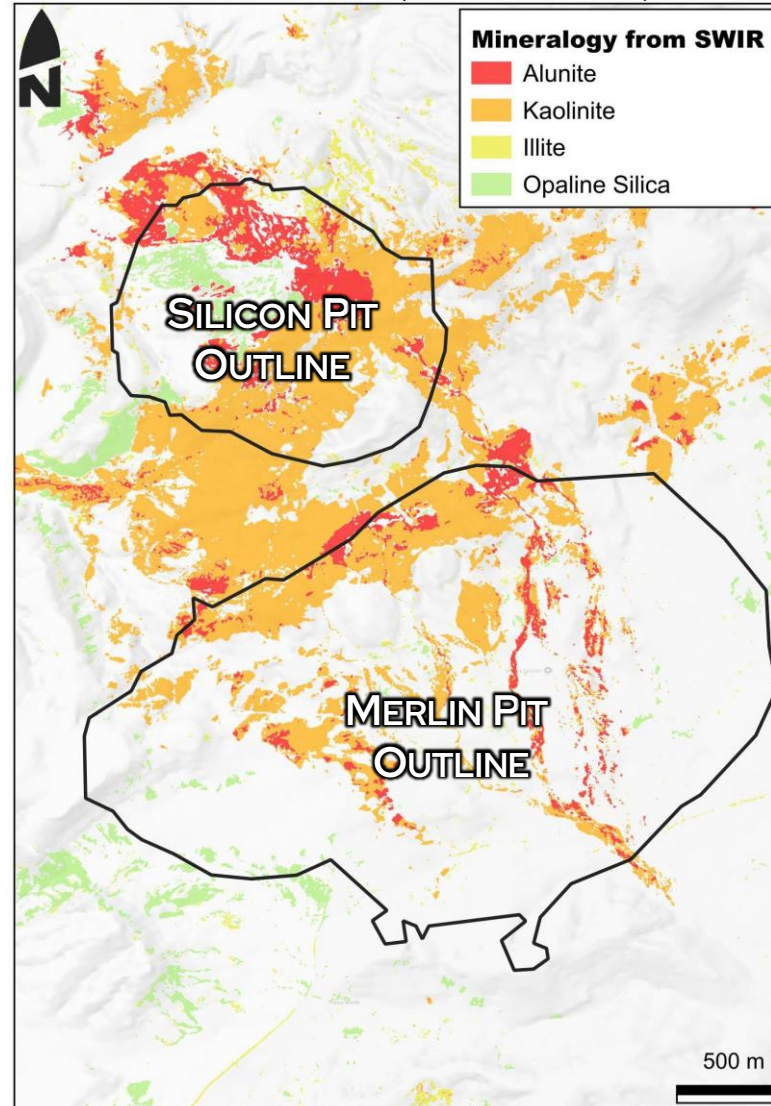




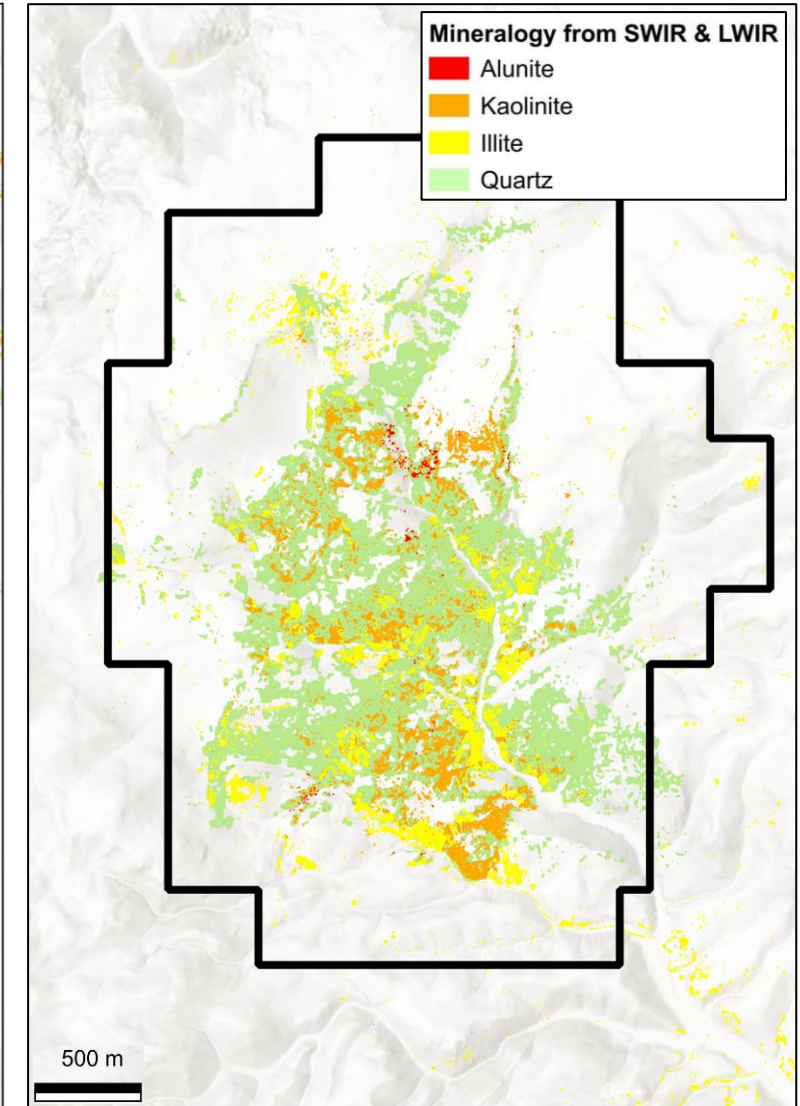
# TIER-ONE SCALE ANALOGUE

- Alteration footprint comparable to Arthur Gold (Silicon+ Merlin deposits; near Beatty, Nevada)”  
~ 12.1 Moz at Merlin + 4.2 Moz at Silicon  
~16.3 Moz total Au resources
- Silicon–Merlin exhibits a broad advanced argillic (alunite–kaolinite) lithocap typical of a higher erosional level
- Alteration, vein textures, and geochemistry suggest Table Mountain confirm the upper levels of a mineralized and preserved LSE system
- Create multiple opportunities for strategic investment by major and mid-tier mining companies (many of whom showed interest in acquiring Table Mountain)

## ARTHUR GOLD (16.3 Moz Au)



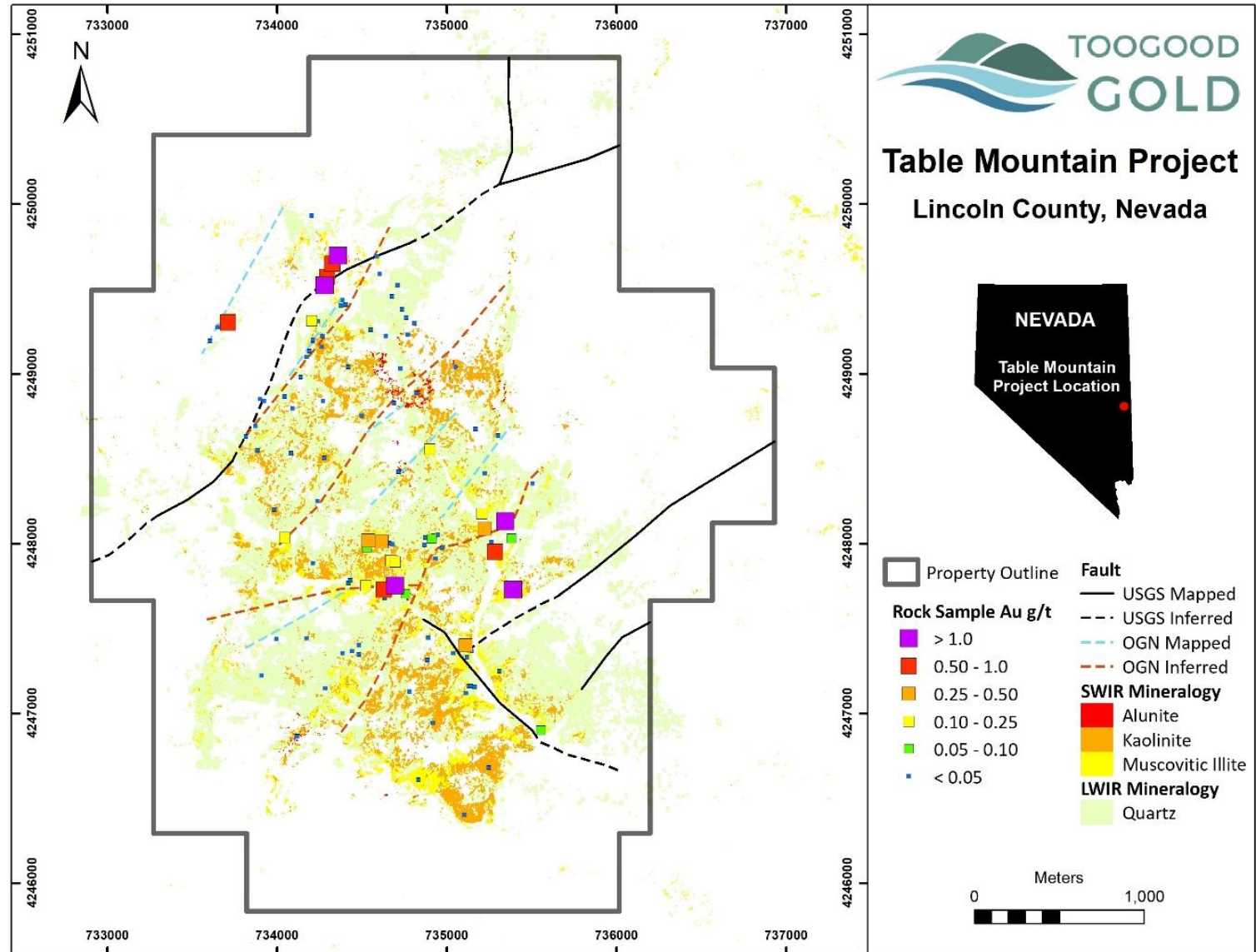
## TABLE MOUNTAIN PROJECT





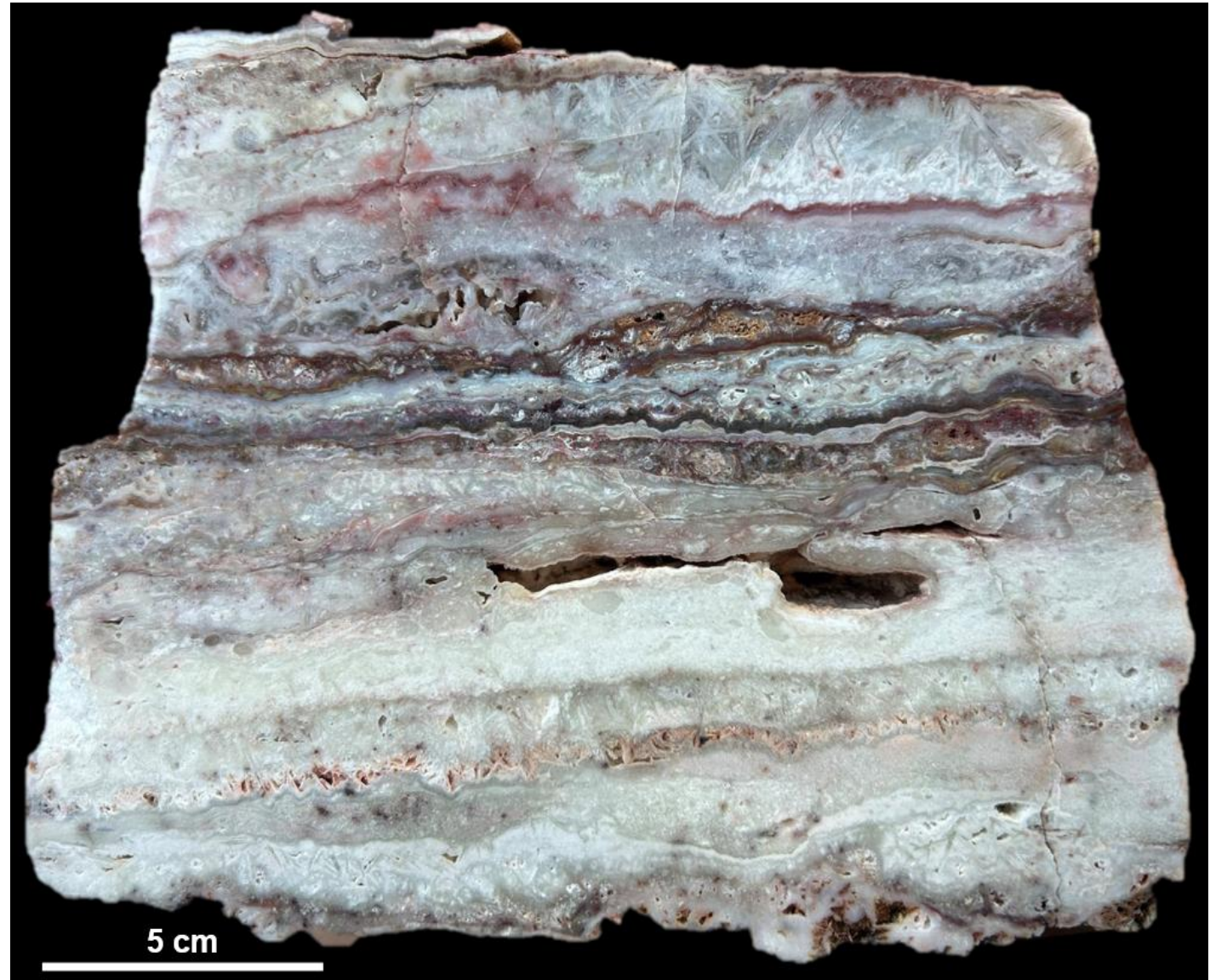
# DISTRICT-SCALE FOOTPRINT

- 4 x 2 km high-level epithermal alteration footprint
- Multiple exposed Au-Ag veins and kilometre-scale drill corridors
- First-pass rock samples up to 2.6 g/t Au and >50 g/t Ag with a strong Sb-As-Hg geochemical halo
- Textbook upper-level epithermal textures including crustiform-colloform banding, chalcedony and breccias confirm a preserved, fertile system
- No known historical drilling despite scale of alteration and vein exposure, representing a true first-pass discovery opportunity



# VEINING AND MINERALIZATION

- Multiple gold-silver quartz veins exposed across the property
- Strong silica flooding and hydrothermal breccias indicate a large mineralizing system
- Banded veins and preserved textures typical of productive Nevada epithermal deposits
- Multiple mineralized structures extend for kilometres across the property
- Geological features suggest the gold-rich “boiling zone” may occur at depth



# VEINING AND MINERALIZATION



Hydrothermal, mineralized breccia



Low-sulphidation vein float

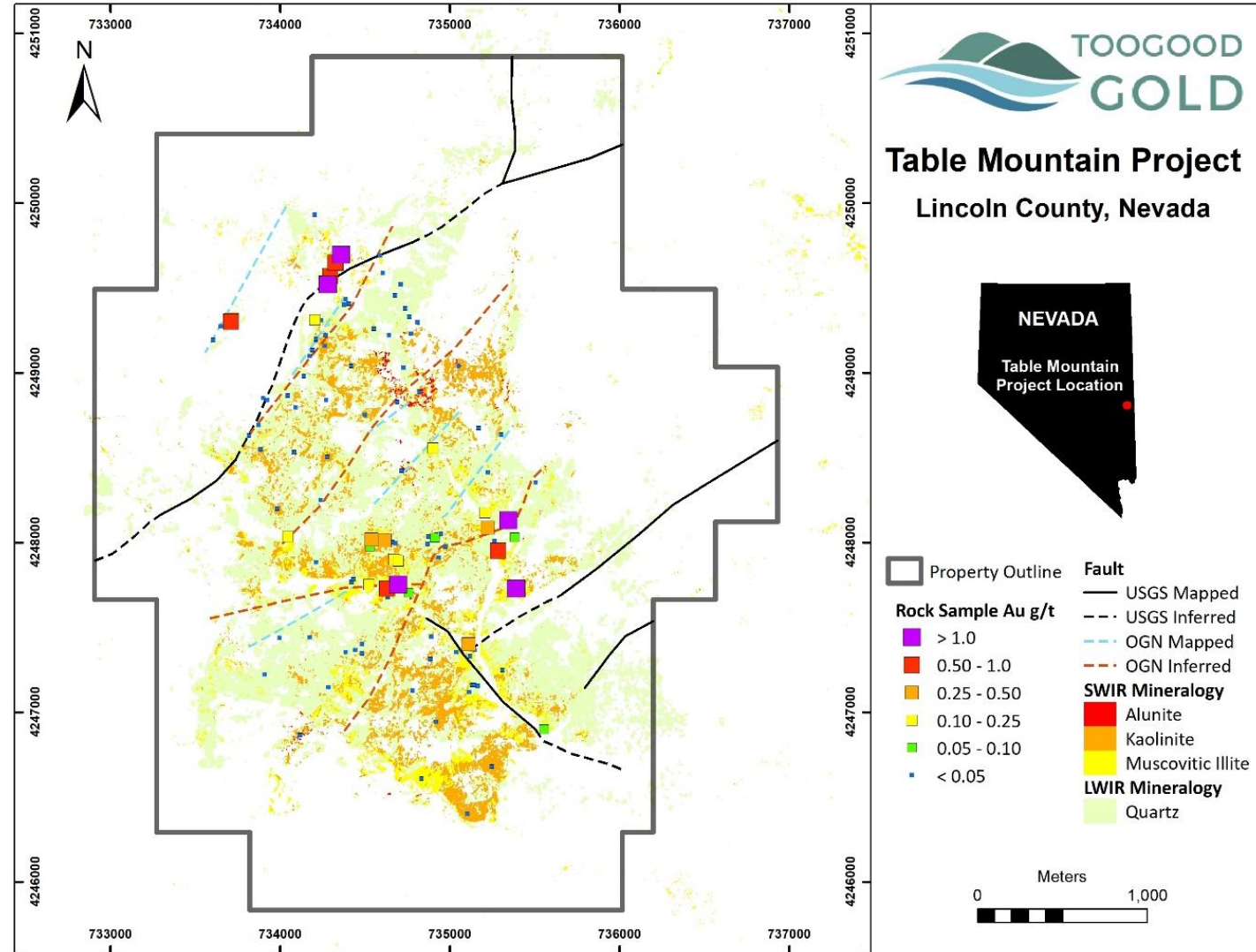


Lattice quartz (after calcite) texture, indicative of boiling



# MULTIPLE KM-SCALE TARGET CORRIDORS

- Structural mapping and geochemistry outline multiple kilometre-scale drill corridors
- >4 km NE–SW graben hosting strong clay alteration
- >3 km SE fault zone may expose levels closer to the prospective boiling horizon
- Multiple kilometre-scale faults mapped by Orogen and USGS
- Phase 1 work will refine drill targets ahead of maiden drilling





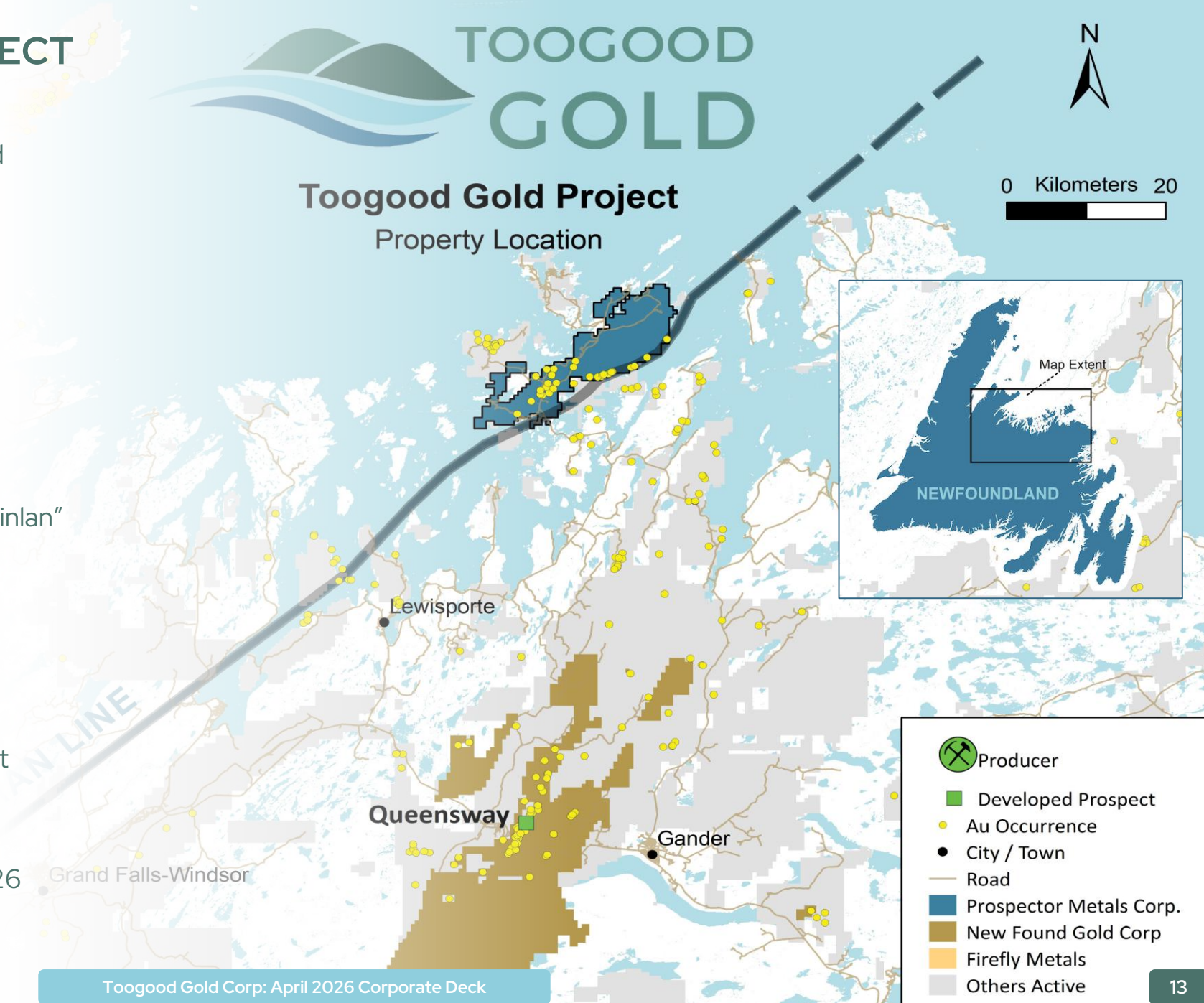
# EXPLORATION STRATEGY

- Phase 1 surface exploration program to commence in May
- Property-wide 1:5000 geological and structural mapping focused on vein architecture, physical volcanology, alteration and vein textural zonation
- Property-wide systematic soil sampling (100-metre line spacing and 25-meter sample spacing)
- Property-wide detailed prospecting and rock sampling program (targeting 250-400 rock samples)
- Property-wide geophysics: drone magnetics, ground gravity
- Drill target generation and ranking, aided by possible CSAMT geophysical survey
- Goal of advancing Table Mountain to a high-impact, discovery-driven maiden drill program in Q3 2026



## Toogood Gold Project Property Location

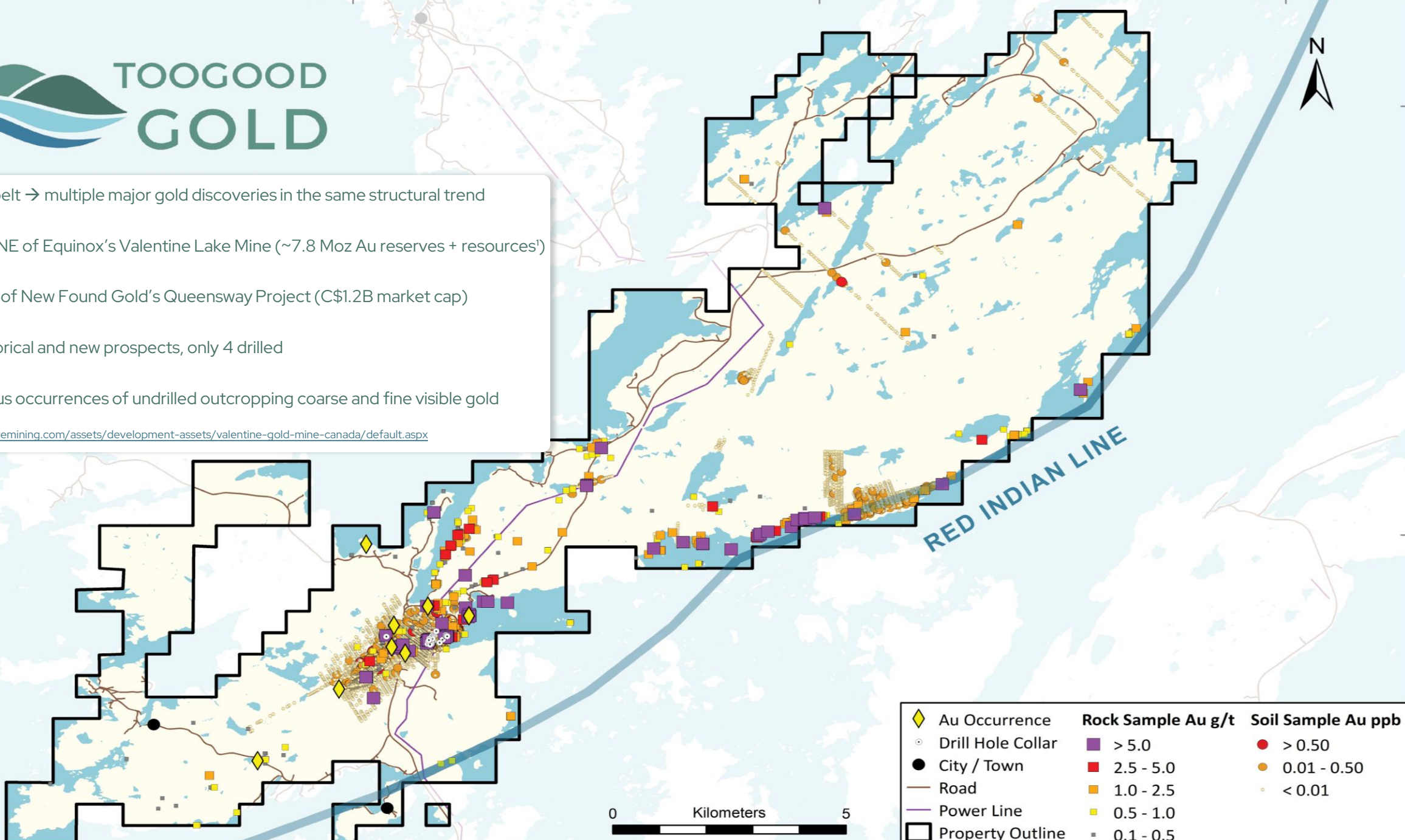
- 164 km<sup>2</sup> high-grade gold project, Newfoundland
- >28 km of fertile underexplored trend
- Aggressive consolidation in 2025
- High-grade drilling discovery (2022, 2025) "Quinlan"
- Visible gold in 25 of 49 holes, wide open
- Regional geochemistry to evaluate entire district
- Extensive surface work to commence in Q2 2026





- Proven belt → multiple major gold discoveries in the same structural trend
- 200 km NE of Equinox’s Valentine Lake Mine (~7.8 Moz Au reserves + resources<sup>1</sup>)
- 50 km N of New Found Gold’s Queensway Project (C\$1.2B market cap)
- >25 historical and new prospects, only 4 drilled
- Numerous occurrences of undrilled outcropping coarse and fine visible gold

<sup>1</sup><https://www.calibremining.com/assets/development-assets/valentine-gold-mine-canada/default.aspx>



	Rock Sample Au g/t	Soil Sample Au ppb
◆ Au Occurrence	■ > 5.0	● > 0.50
○ Drill Hole Collar	■ 2.5 - 5.0	● 0.01 - 0.50
● City / Town	■ 1.0 - 2.5	● < 0.01
— Road	■ 0.5 - 1.0	
— Power Line	■ 0.1 - 0.5	
□ Property Outline	■ < 0.1	

**Quinlan Discovery:**

- Soil sampling – outcrop peel – channel sampling – drilling discovery
- Boots-on-the-ground geoscience on highly explorable ground



## 2022 MAIDEN DRILL PROGRAM AT QUINLAN:

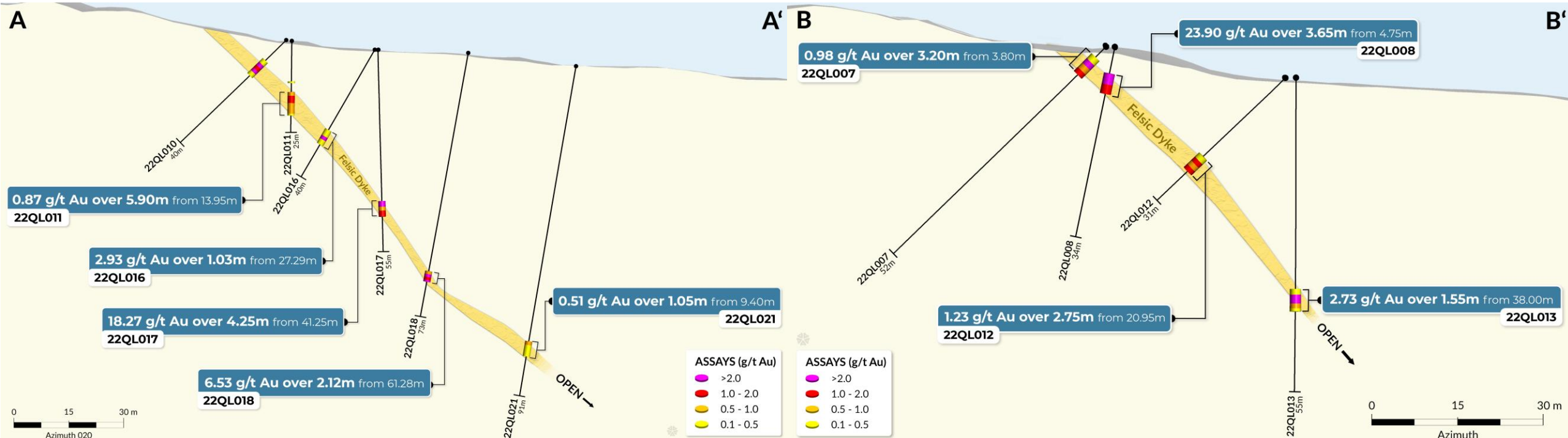
Drill assay results include:

- 23.90 g/t Au over 3.65 (83 g\*m) incl. 43.22 g/t Au over 1.95 m
- 18.27 g/t Au over 4.25 m (78 g\*m) incl. 70.31 g/t Au over 1.05 m
- 9.40 g/t Au / 3.18 m from 9.40 m (37 g\*m) incl. 22.76 g/t Au over 1.10 m

## 2025 FOLLOW-UP PROGRAM AT QUINLAN:

Drill assay results include:

- 14.48 g/t Au over 3.35 m (49 g\*m), incl. 72.53 g/t Au over 0.65 m
- 29.31m @ 2.20 g/t Au (65 g\*m)
- Dyke hit in 100% of holes, remains wide open in all directions





## District-Scale Nevada Discovery Opportunity

- Undrilled low-sulphidation epithermal system
- 4 × 2 km alteration footprint with multiple gold-silver veins
- “Best greenfields opportunity generated to date” (Orogen)
- Comparable alteration footprint to Arthur Gold (~16 Moz)



## High-Grade Discovery – Newfoundland

- Quinlan discovery with visible gold in 25 of 49 holes
- Quinlan open in all directions
- High-grade drilling including 23.9 g/t Au over 3.65 m
- >28 km underexplored structural trend



## Proven Leadership Team

- Team behind multiple successful exploration companies
- Track record creating >C\$4B in shareholder value
- Strong access to capital and deal flow



## Clear Discovery Catalysts

- Table Mountain maiden drill program targeted for Q3
- Phase 1 exploration to refine high-priority drill targets
- District-scale surface program advancing Newfoundland discovery



For more information:



[info@toogoodgoldcorp.com](mailto:info@toogoodgoldcorp.com)



Toogood Gold Corp.  
Suite 1012 – 1030 West Georgia St.  
Vancouver, British Columbia  
V6E 2Y3

TSXV; TGC; OTCQB: TGGCF